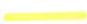




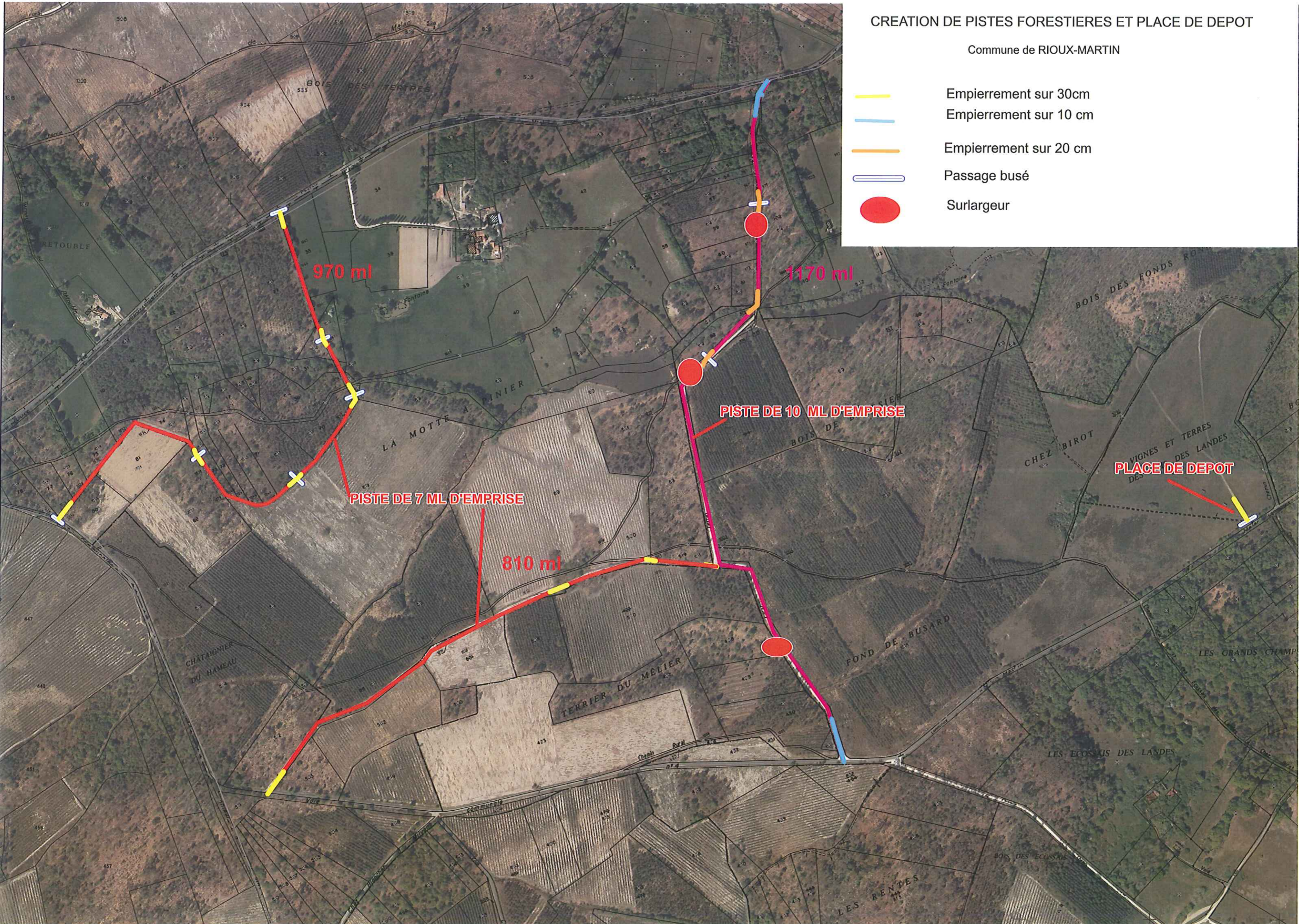


CREATION DE PISTES FORESTIERES ET PLACE DE DEPOT

Commune de RIOUX-MARTIN

-  Empierrement sur 30cm
-  Empierrement sur 10 cm
-  Empierrement sur 20 cm
-  Passage busé
-  Surlargeur



970 ml

1170 ml

PISTE DE 7 ML D'EMPRISE

PISTE DE 10 ML D'EMPRISE

810 ml

PLACE DE DEPOT